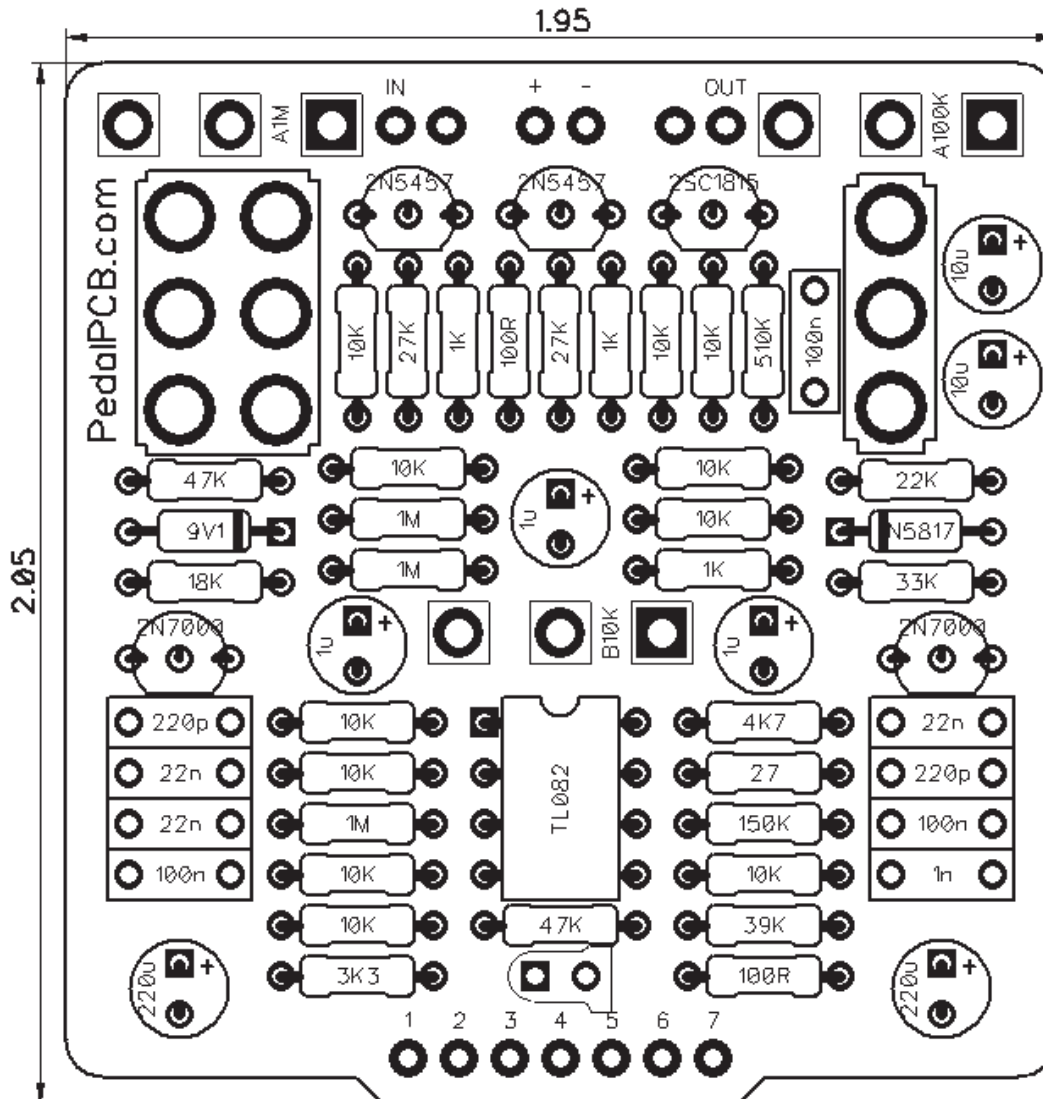


# **PedalPCB** **ADHD v2**

Revision 01.24.19



## Controls

- **Volume**
- **Tone**
- **Drive**
- **HP/LP (Toggle Switch)**
- **True-Bypass / Buffered Bypass (Toggle Switch)**

*All trademarks and registered trademarks are the property of their respective owners. The company, product, and service names used in this web site are for identification purposes only. Use of these names, logos, and brands does not imply endorsement.*

**RESISTORS (1/4W)**

R1 1M  
 R2 10K  
 R3 1M  
 R4 3K3  
 R5 100R  
 R6 18K  
 R7 10K  
 R8 10K  
 R9 39K  
 R10 150K  
 R11 22K  
 R12 33K  
 R14 1K  
 R16 510K  
 R17 10K  
 R18 100R  
 R19 47K  
 R20 27R  
 R21 10K  
 R22 10K  
 R26 10K  
 R27 10K  
 R28 1K  
 R29 27K  
 R30 10K  
 R31 1M  
 R32 10K  
 R33 10K  
 R34 1K  
 R35 27K  
 R37 47K  
 RLED 4K7

**CAPACITORS**

C1 22n  
 C2 100n  
 C3 220p  
 C4 1n  
 C5 100n  
 C6 220p  
 C7 1u  
 C8 22n  
 C9 100n  
 C10 1u  
 C11 220u  
 C12 220u  
 C13 22n  
 C14 10u  
 C15 10u  
 C18 1u

**SWITCHES**

SW1 SPDT (On/On)  
 SW2 DPDT (On/On)

**INTEGRATED CIRCUITS**

IC1 TL082

**TRANSISTORS**

Q2 2N7000  
 Q3 2N7000  
 Q4 2SC1815  
 Q5 2N5457  
 Q6 2N5457

**DIODES**

D1 1N5817  
 D6 1N4739

**POTENTIOMETERS**

VOLUME A100K  
 DRIVE A1M  
 TONE B10K

# PedalPCB **ADHD v2**

